

MONTHLY MEMBERSHIP PROGRESS REPORT

District 4 C6

Results as of: 6/30/2024

GMT:

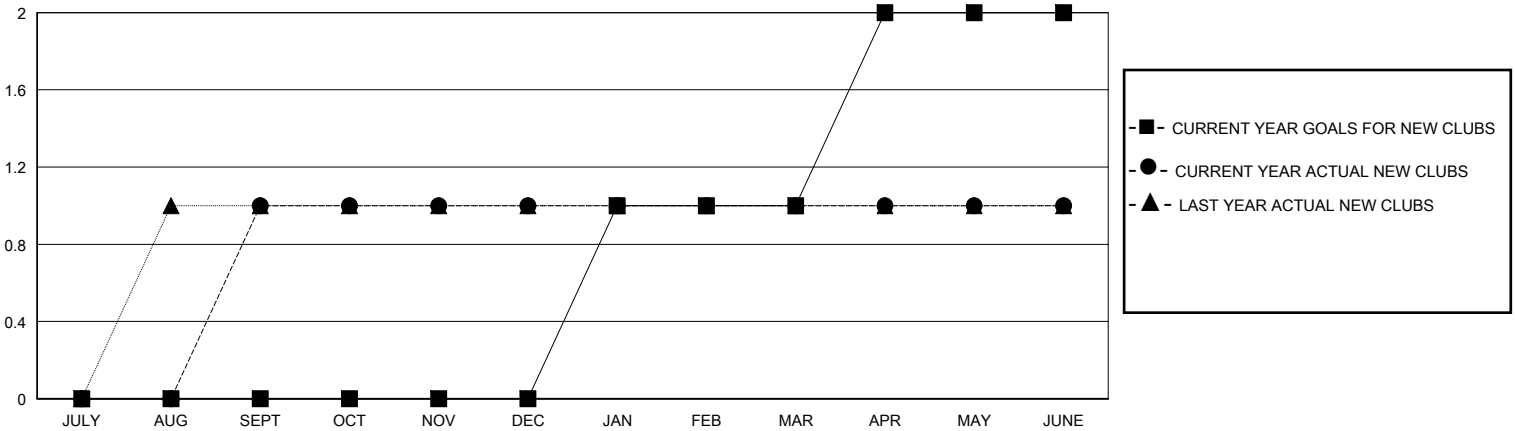
LOCATION CALIFORNIA

GMT CA

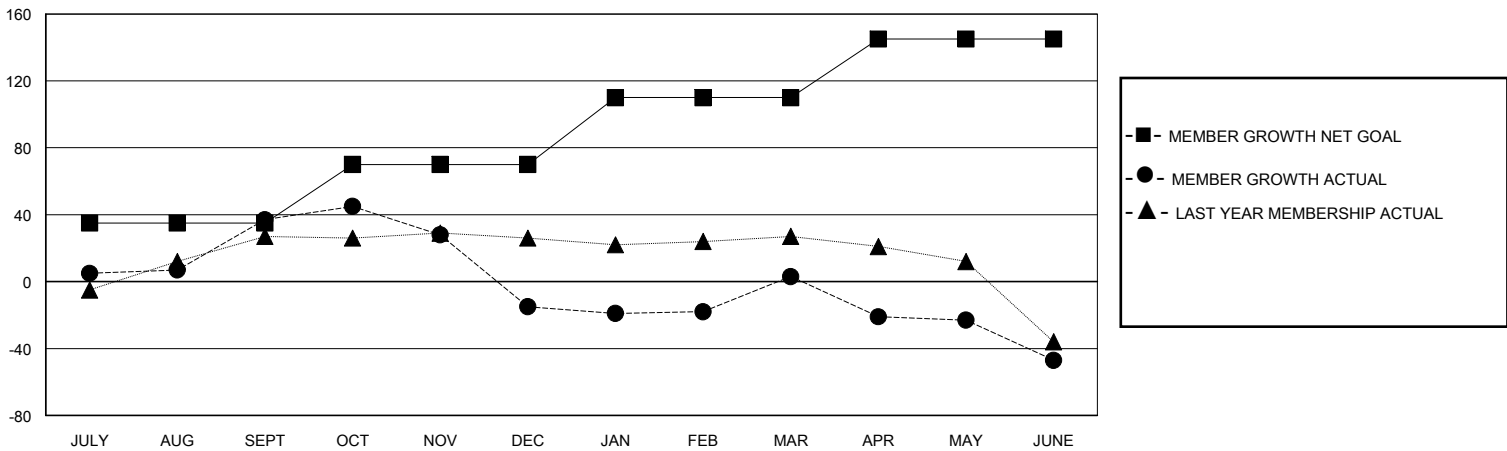
Clubs			
RESULTS FOR 2023-2024			
QUARTER	NEW CLUB GOAL	NEW CLUBS	DROPPED CLUBS
JULY/AUG/SEPT	0	1	0
OCT/NOV/DEC	0	0	2
JAN/FEB/MAR	1	0	1
APR/MAY/JUNE	1	0	1

Members			
RESULTS FOR 2023-2024			
QUARTER	MEMBER GROWTH NET GOAL	MEMBER GROWTH ACTUAL	DROPPED MEMBERS ACTUAL (including transfers)
JULY/AUG/SEPT	35	71	29
OCT/NOV/DEC	35	27	74
JAN/FEB/MAR	40	40	20
APR/MAY/JUNE	35	32	74

GOALS AND ACTUAL NEW CLUBS CUMULATIVE



GOALS AND ACTUAL MEMBERS CUMULATIVE



DROPPED CLUBS: 4	31 CLUBS OF 42 ADDED 1 OR MORE NEW MEMBERS	GENDER DISTRIBUTION	
		MALE 507 (52.92%)	FEMALE 450 (46.97%)
DROPPED MEMBERS		CLICK HERE FOR CUMULATIVE MEMBERSHIP DATA	TOTAL FAMILY UNIT MEMBERS 180
DECEASED 28	CLUB CANCELLED 28		FAMILY MEMBERS PAYING HALF DUES 94
OTHER 128	TOTAL 184		